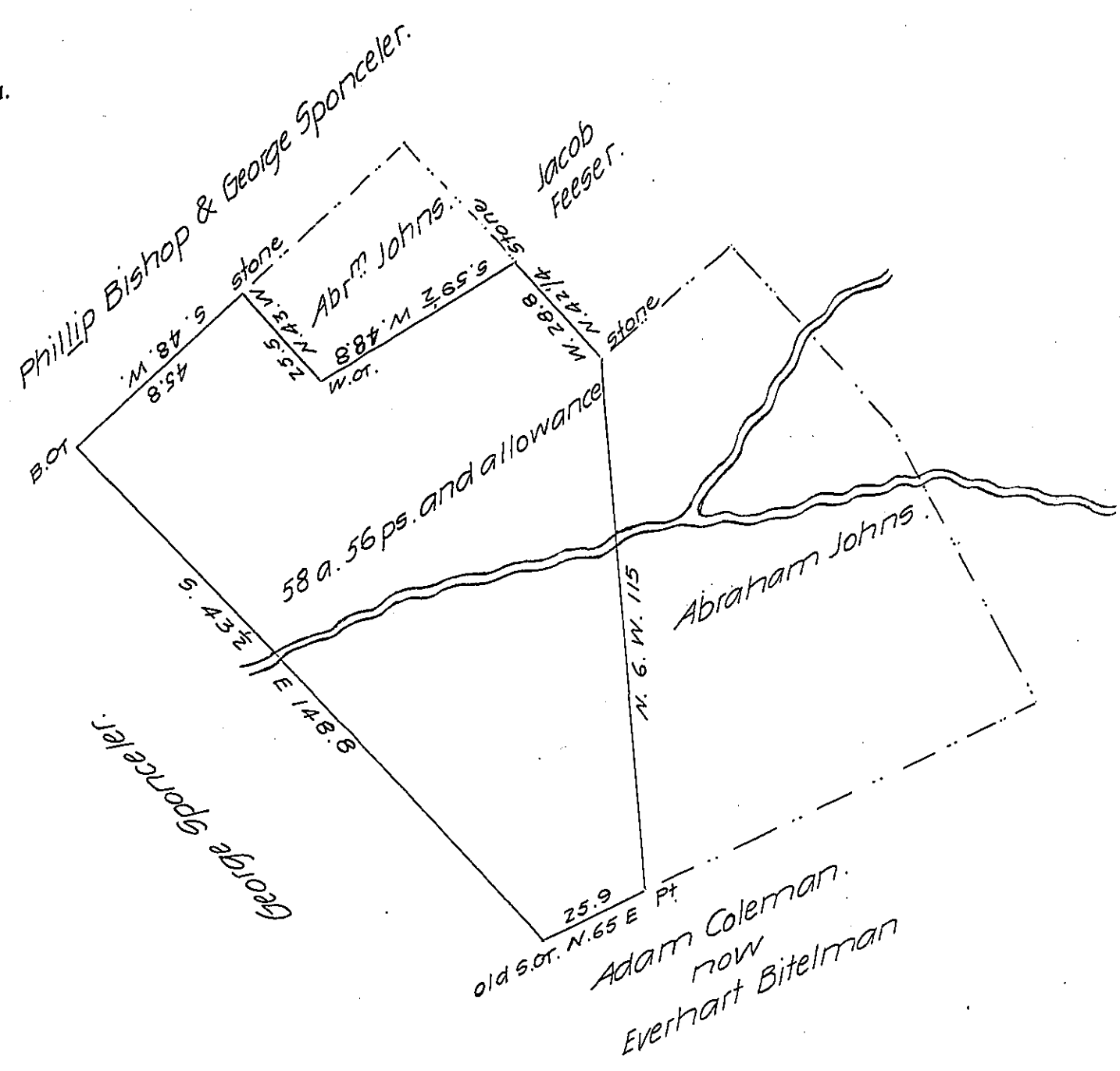


FORM No. 1.



Situate in Germany Township, Adams County, Containing 58 a. 56 ps and allowance. Part of 231a. 18p Surveyed ~~to~~ upon Warrant to Johannes Widel (alias) Weldel dated the 27th day of January 1757. Surveyed from the residue for John Wilbert Esqr. the 1st day of December 1823.

By John Dickson D.S.

To Samuel Cochran Esqr.  
Surveyor General.

IN TESTIMONY that the above is a copy of the original remaining on file in the Department of Internal Affairs of Pennsylvania, made conformably to an Act of Assembly approved the 16th day of February 1833, I have hereunto set my hand and caused the Seal of said Department to be affixed at Harrisburg, this fourth day of September 1907

*Henry Houch*  
Secretary of Internal Affairs.